

STEEPLEJACK SCALES CATHEDRAL TO DO REPAIRS

His name is Jim Phelan. He is based in San Francisco and very few people do the kind of work he does; he is a steeplejack. Last week Jim scaled the 180-foot dome of the Cathedral, checking the condition of the copper and what needs to be done to the lantern at the top. He also climbed the three towers (the middle one is 240 feet high), checking the condition of the sheet metal on the outside and crosses at the top. Next week he will return to do the repair work, something that will have to be done without the benefit of scaffolding. He will suspend himself on cables high above the K Street Mall as he continues the restoration of the 114-year-old Cathedral. A new roof of composition shingles will be put on the Cathedral but the copper will remain on the

dome and towers.



And while he works on the outside (everything above the roof on the outside is the domain of the steeplejack), other construction workers plan to open up the dome on the inside. The false dome that was familiar to parishioners above the altar has already been partially removed. Scaffolding will be installed on the inside in the next month to remove the remainder of that dome, in particular the steel frame holding up the structure. Then a new interior dome will be constructed to replace

the one that was removed back in the 1930s.

LOVE THE PARISH BUT BEWARE OF PAROCHIALISM

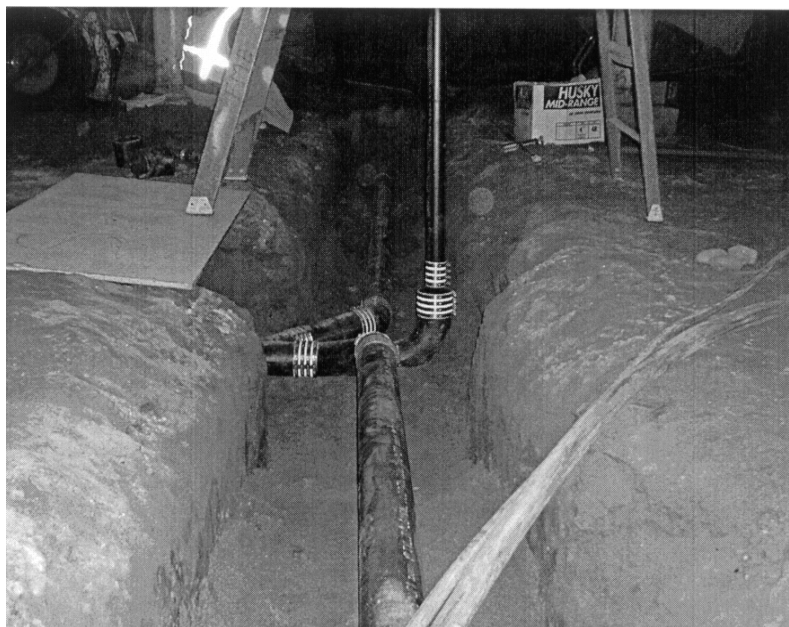
This Sunday Cathedral parishioners are invited to participate in either of two "Speak Up" sessions following the 9:30 am and 12:30 pm Masses at Westminster. The sessions, which are part of the preparation for the diocesan synod, will focus on parish community. The following are some thoughts on the role of a parish by Walter Niebrzydowski:

Parochialism is wary of others; a parish welcomes them. Parochialism separates us from them; a parish unites us with them. Parochialism closes us in; a

parish opens us out. Parochialism forms a club; a parish fosters community. Parochialism sows suspicions; a parish promotes respect. Parochialism segregates and excludes; a parish incorporates and includes. Parochialism constricts and confines; a parish expands and overflows. Parochialism would have us dig in; a parish bids us to reach out. Parochialism is self-centered and self-serving; a parish is self-sacrificing and self-effacing in its service.

CATHEDRAL RESTORATION CONTINUES

Shown at right is the basement of the Cathedral as it appears today, stripped down to the bricks before being reconstructed. Shown here is the dirt floor with the concrete slab taken away. The trenches in the photo are for sewerage pipes that must be put in place before the new concrete slab is poured. All necessary city permits have now been granted and construction is proceeding at full pace. The project is expected to take another 12 to 15 months before completion.



MASSES FOR THE WEEK

MON 4/26/2003 Easter Weekday
Rdgs: Acts 6: 8-15; Jn 6: 22-29
7:00 am: All Souls
12:00 noon: David Gutierrez, S.I.

TUES 4/27/2003 Easter Weekday
Rdgs: Acts 7: 51—8: 1a; Jn 6: 30-35
7:00 am: All Souls
12:00 noon: Donald Blackford

WED 4/28/2003 St. Peter Chanel
Rdgs: Acts 8: 1b-8; Jn 6: 35-40
7:00 am: Jose Maciel, S.I.
12:00 Noon: Jose Maciel, S.I.

THURS 4/29/2003 St. Catherine of Siena
Rdgs: Acts 8: 26-40; Jn 6: 44-51
7:00 am: All Souls
12:00 noon: Victorine Carmichael

FRI 4/30/2003 St. Pius V
Rdgs: Acts 9: 1-20; Jn 6: 52-59
7:00 am: All Souls
12:00 noon: Cory Zoeller

TEACHERS NEEDED FOR CATHEDRAL RELIGIOUS EDUCATION PROGRAMS

The Cathedral of the Blessed Sacrament Religious Education Program is recruiting volunteers for the 2004-05 pastoral year. Our programs are now ministering to more than 200 children and their families. Vacancies exist in all areas of program support including secretarial, fundraising, and operations. Qualified teachers and teacher aids are desperately needed for grades Pre-kindergarten, 3rd, 4th, 5th, Special 1st Communion, 2nd year Catechumenate, and Building Faith. No matter what your talents may be, we have a place for you in our programs. Classes begin September 18, 2004, at Immaculate Conception School located at 1st Avenue and Broadway from 9:30 am to 12 Noon. All interested persons are asked to call the Religious Education Office before May 15, 2004, at (916) 444-5364 to obtain applications and more information.

PROFESSIONAL & BUSINESS BREAKFAST CLUB

The Catholic Professional and Business Breakfast Club meets next on Wednesday, May 12, 2004 at the DoubleTree Inn (across from Arden Fair Mall) from 7-8:30am. Acclaimed actor Leonardo Defillipis is guest speaker on St. Therese of Lisieux. Cost: \$20 for members, \$25 for nonmembers. Call for reservations at (916) 930-1144.